

Positive Behaviour for Learning

# Community Notices



PLEASE BE AWARE THAT THE SCHOOL'S ACCEPTANCE OF ADVERTISING IN THE SCHOOL NEWSLETTER DOES NOT CONSTITUTE APPROVAL AND/OR ENDORSEMENT FOR ANY PRODUCT OR ACTIVITY.

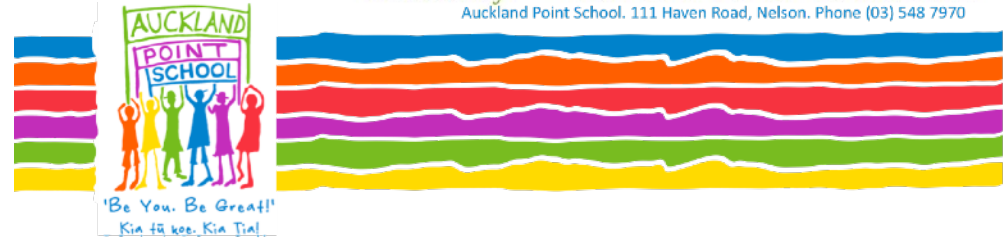


**10TH SEPT 2023 10AM-3PM**  
**VALLEY TO VIEW FAIR**  
 Hira School  
 Cable Bay ADVENTURE PARK  
 BOUNCY CASTLES - FACE-PAINTING - FAIR GAMES - PONY RIDES - LIVE MUSIC - BBQ - MARKET STALLS - WHITE ELEPHANT STALL - RAFFLES - SILENT AUCTIONS - BIKE TRAILS - QUAD BIKES - SKYWIRE AND MUCH MORE...

**Krankin' Kids**  
 mountain bike coaching for youth  
**BOOKINGS ARE OPEN FOR TERM 4!**  
 8 - 15yr olds, all abilities  
 Starts term 4, running over 7 weeks  
 4.50 - 6.30pm  
 Mon @ Kaiteriteri  
 Wed @ Codgers  
 Thurs @ Richmond  
 Van Man's Rabbit Island  
 4 - 5.30pm  
 For sign-ups and info, go to the website  
 Starts term 4, running over 7 weeks  
 Book online ↓  
[www.krankinkids.co.nz](http://www.krankinkids.co.nz)

# Newsletter

Greetings - Kia ora ra ki te whanau  
 Auckland Point School. 111 Haven Road, Nelson. Phone (03) 548 7970



Monday 28 August, 2023

Nelson Youth Theatre Company's production of  
**Disney THE ARISTOCATS KIDS**  
 Music and Lyrics by Thomas M. Sherman, Robert S. Sherman, Robert Lopez & Kristen Anderson-Lopez  
 Book and Additional Lyrics by Cheryl Davis  
 Based on the stories of A. A. Milne and the 2011 Disney animated feature film  
**THEATRE ROYAL NELSON**  
 27-30 September, 2pm  
 Bookings: [theatroyalnelson.co.nz](http://theatroyalnelson.co.nz)

Nelson Youth Theatre Company's production of  
**Disney Winnie the Pooh KIDS**  
 Music and Lyrics by Robert M. Sherman & Robert S. Sherman, Robert Lopez & Kristen Anderson-Lopez  
 Book and Additional Lyrics by Cheryl Davis  
 Based on the stories of A. A. Milne and the 2011 Disney animated feature film  
**THEATRE ROYAL NELSON**  
 20-22 September - 6pm  
 23 September - 10am, 12pm & 2pm  
 Tickets: [theatroyalnelson.co.nz](http://theatroyalnelson.co.nz)

Nelson Youth Theatre Company presents  
**LEGALLY BLONDE The Musical**  
 Music and Lyrics by Laurence O'Keefe and Nell Benjamin  
 Book by Heather Hoch  
 Based on the novel by Amanda Brown and the 2001 Disney animated feature picture  
**THEATRE ROYAL NELSON**  
 25-30 SEPTEMBER  
 Bookings: [theatroyalnelson.co.nz](http://theatroyalnelson.co.nz)

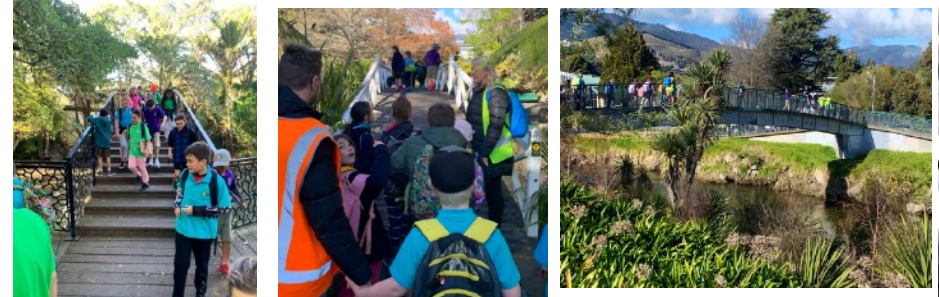
**WILLOW BANK HERITAGE VILLAGE**  
 OPEN DAY DATES 2023/24  
 ENTRY FEE: \$7 PER ADULT / \$3 PER CHILD  
 WILLOW BANK HERITAGE VILLAGE IS A FUN AND INTERACTIVE LIVING MUSEUM NEAR SOUTH OF WAREFIELD, NELSON. WE HAVE 20+ SHOP COORNS FOR YOU TO EXPLORE, FOOD AND DRINK AND LOTS MORE!  
 OPEN DAYS ON THE FOLLOWING SUNDAYS 10AM - 3PM  
 SEPT 3, OCT 1, DEC 3, FEB 4, MAR 3, APR 7, MAY 5  
 BOOKINGS: [www.willowbankheritage.co.nz](http://www.willowbankheritage.co.nz)

**Helping Families Book FAIR**  
 9th & 10th September 2023  
 BISHOPING PRIMARY SCHOOL  
 24 CAMERON STREET  
 BISHOPING  
 OPEN 9AM - 4PM  
 NOTHING OVER \$2!  
 BRINGING YOUR CHILDREN? THANK YOU FOR YOUR SUPPORT!  
[WWW.HELPINGFAMILIES.CO.NZ](http://WWW.HELPINGFAMILIES.CO.NZ)

**UNITED SOFTBALL NELSON**  
**T-BALL AND SOFTBALL (U7S)**  
 Cost: FREE  
 WEATHER MONDAYS  
 4:30pm - 5:30pm  
 1000-1500  
 2 WEEKS  
 REGISTER HERE: [www.unitedsoftball.co.nz](http://www.unitedsoftball.co.nz)

## Our City Bridge Walk

As part of our study into Bridges and Structures the whole school went on a hiko. We headed out to walk the Nelson City Bridges Trail. A big walk, taking us from school up to the Nile Street Bridge and then looped back to school. The learning consists of understanding bridge types and the reason the designers used that type of structure along with the history of the bridges.



Kia ora whanau, if you have any extra New World MasterChef Cookware stickers you don't wish to use, then the school would welcome them to help us achieve some cookware for our new APS kitchen. Big thanks.





## Principal's Pen

Tēnā koutou katoa,

In the past two weeks we have seen an increase in infectious illnesses and tamariki have been away longer due to the varying bugs affecting whānau.

We are very aware that this causes disruption to your daily lives and work and we are appreciating you all keeping your children at home until they are symptom free and well enough to return to school. Our hygiene, cleaning and sanitising regimes have continued following covid conditions as we ensure we are reducing conditions for infections.

Last Friday Tom Ashton, APS Trustee and myself, met with traffic/roading officials from Nelson City and Tasman Councils and Te Waka Kotahi to discuss our school situation regarding the road, traffic speed and the options we would like to see implemented for increased safe passage outside of school and across Haven Road to Trafalgar Centre and beyond.

They were keen to discuss our perspective. We have requested that we have flashing warning lights for 40km, a raised crossing that would ensure greater visibility of the crossing.

By 2024 there will be reduced speeds outside of schools during school hours and the planned speed is 30km. Schools communities who be surveyed for responses around the new rules.

These people will keep us up to date with progress.

In the meantime please keep accompanying your children across the crossing before 8.30 and after 9.00am and come into the school grounds after 3.00pm to collect your child.

Lst Friday we have had a lovely yellow day for 'Daffodil Day'. The sunshine made our day bright and the many daffodils adorning our tamariki were a symbol of hope and that spring is nearly here!

Thank you for your coins as a donation for the Cancer Society.

As part of our PB4L (Positive Behaviour for Learning) weekly focus 'Respect' has been the theme for the past two weeks. We have centred the learning around being respectful to others, for ourselves, for our own and school property and the environment. As part of this we consider being part of our APS- Te kura o Matangi Awhiowhio, school. Taking pride and being respectful citizens of our school is an essential part of being a member of our school. Wearing our school uniform is a key part of this pride and respecting the expectation that it is part of who we are at our school. It has been disappointing to see that our tamariki are not all wearing it fully and that non school uniform hoodies and streetwear has been appearing more regularly. We look to our whānau and parent community to support us in ensuring that your tamariki come to school wearing their uniform and see that this is an important part of belonging to a 'team' and that we are united in this. Our uniform is unique, vibrant and enables our tamariki choice. In the long run this saves you money as well.

Have a safe and happy weekend.

May there be a speedy recovery for those who are unwell.

Best wishes,  
Ngā mihi nui,

Sonya



## Things to Remember

Assemblies are on Mondays & Fridays at 9.15am in the hall.

### Term 3, 2023 Dates:

Monday 17 July, 2023	- First day of Term 3
Friday 25 August, 2023	- Daffodil Day. Wear <b>Yellow</b> (Gold Coin Donation) - Disco Night (Camp Fundraiser)
Tuesday 5 September, 2023	- Sports Winter Tournament
Friday 8 September, 2023	- Muffi Day (Gold Coin Donation. Camp fundraiser)
Friday 15 September, 2023	- Movie Night (Camp Fundraiser)
Tuesday 19 September, 2023	- BOT meeting : 5.30pm, Staffroom
Friday 22 September, 2023	Last day of Term 3 and 'Grandparents Day'

### 2023 Term Dates

**Term 1: Thursday, 2 February 2023 – Thursday, 6 April 2023**

**Term 2: Wednesday, 26 April 2023 – Friday, 30 June 2023**

**Term 3: Monday, 17 July 2023 – Friday, 22 September 2023**

**Term 4: Monday, 9 October 2023 – Friday, 15 December 2023**

### Auckland Point School Carpark & Early Collection

Whānau please be reminded the school car park is strictly only available for Auckland Point School Staff and Kindergarten.

If the drop off / pick up parking on Haven Road is unavailable please park at the Trafalgar Centre and walk across the footbridge and road crossing with your child/ren.

Should you need to collect your child/ren early or during the school day, for reasons such as medical appointment, please phone ahead to the school office so we can arrange to have your child sent over from their classrooms.

**Parents are not permitted to go directly to the classrooms and must sign in at the office when visiting. This is a matter of safety and security.**

Collecting your child/ren from school before 2.45pm can be very disruptive for their class teacher and your child's learning without prior notice.

# PBL Focus - Leading Light

**R** RECOGNIZE that everyone is different

**E** Earn TRUST through your ACTIONS

**S** SELF-Monitor think FIRST

**P** Personal SPACE GIVE A LITTLE ROOM.

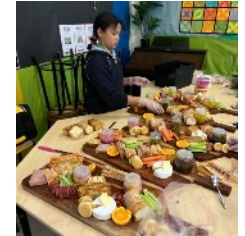
**E** Empathy is to LISTEN & connect

**C** Cheer on others and their SUCCESS

**T** treat everyone as an Equal

**RESPECT**  
 Treat others as you want to be treated  
 Treat others with kindness  
 SPEAK COURTEOUSLY  
 Be Considerate of Others Feelings  
 Treat others property with the same care as your own  
**Be Polite** No bullying  
 Be nice in words and actions  
 DON'T FORGET PLEASE AND THANK YOU

# Catering Superstars for Wānanga Week with Whaea Ash



## St. Vincent Tahi



Auckland Point School visited the sculpture - The Taurapa - this week. The artist Maia Hegglin, is busy creating our pou for our school garden.

A proud Almira created a hamburger to learn about wholes, halves, thirds and quarters.



St. Vincent Tahi enjoyed a walk to see sculptures this week.



Collaboration is fun!





## BE YOU. BE GREAT! AWARDS

Term 3, Week 5



### Trafalgar Room

**Dante Smith:** For using great description words when we are baking.

**Una Mapu Fetu:** For working hard to form your letters correctly during writing time.

### St. Vincent Tahi Room

**Hakaria Hemi:** For having an amazing conversation with his teacher. Ka pai, tino pai Hakaraia.

**Almira Daly-Patterson:** For being calm and working hard in class all week. Well done, Almira.

### St. Vincent Rua Room

**George Westall:** For trying hard to make good choices.

**Jasmien way:** For being supportive of others and for being a great friend.

### Nile Tahi Room

**Peyton Knudsen:** For an outstanding attitude towards all areas of learning.

**Nikora Scott-Dysart:** For showing initiative to make good choices in class.

### Nile Rua Room

**Shaylah Solloway-Leckie:** Excellent work focus and Integrity. Wonderful to have you back in class.

**Shayna Freeman:** Excellent care, thought and detail with comprehension and research tasks.

### Fair Play

**Te Hoiere:** For being a respectful student and a kind friend demonstrating The APS Way in the playground.

### Leading Light

**Emma Miller:** For being a caring friend and using your initiative during singing.



## BE YOU. BE GREAT! AWARDS

Term 2, Week 6



### Trafalgar Room

**Te Wakarere Hemi:** For working hard during maths rotations.

**Phoenix McMaster:** For asking questions to strengthen your knowledge during Literacy.

### St. Vincent Tahi Room

**Estiana Khadka KC:** For being a bright, positive and super-helpful role model in our class. Thank you, Estiana.

**Linkin Roe:** For being a hard-working, mindful and helpful role model in our class. Thank you, Linkin.

### St. Vincent Rua Room

**TeRena Scott:** For being supportive of others and for being a great friend.

**Nevaeh Thompson:** For focused learning and great progress with reading.

### Nile Tahi Room

**Riley Norling:** For displaying outstanding determination and teamwork when learning to play Horo Hopu.

**Lucca Eastman:** For having greater independence when completing his reading responses.

### Nile Rua Room

**Azariah O'Donnell-Carter:** Fabulous teamwork and citizenship when working in groups and teams.

**Dy-Mon Valentine:** Focused learning when working independently.

### Fair Play:

**Marshall McLeod:** For being an incredible leader when giving out bikes. Ka pai to mahi!

### Leading Light:

**Phoenix McMaster:** For demonstrating amazing friendship qualities when buddied. with a new friend in Trafalgar.

